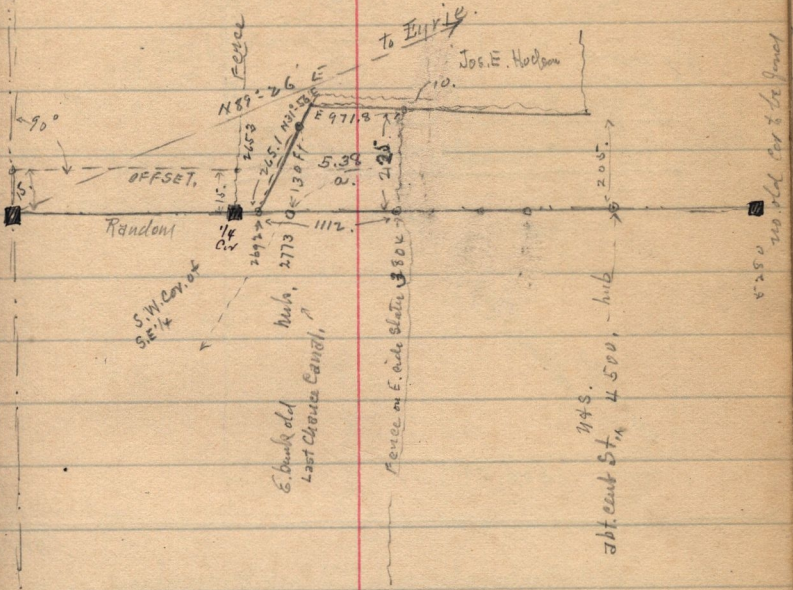


WASHINGTON JENKINS CIV. ENG.

April 15-1898.
Lizzie Condon.

" cor. of Secs 64, 7, 0, 1 W. bdy, T. 6, N. R. 2, W.



Following is description of the tract surveyed above
 Part of the S.E. 1/4 of Sec. 6, T. 6, N. R. 2, W.
 Beg. at a point, 39 ft. S. of S.W. cor. of said 1/4 Sec.
 Running thence E, 112 feet, thence North, 225 ft.
 thence W, 977.8 ft., thence S 31° 56' W, 265.1 ft. to beg.
 5.38 a. Conveyed by Jos. E. Hodson to Lizzie Condon